

# **South Humber Bank Energy Centre Project**

Planning Inspectorate Reference: EN010107

South Marsh Road, Stallingborough, DN41 8BZ

The South Humber Bank Energy Centre Order

**Document Reference: 4.7 Indicative Electrical Connection Plan**

The Infrastructure Planning (Applications: Prescribed Forms and Procedure) Regulations 2009 - Regulation 5(2)(o)

---



**Applicant: EP Waste Management Ltd**  
**Date: April 2020**

## DOCUMENT HISTORY

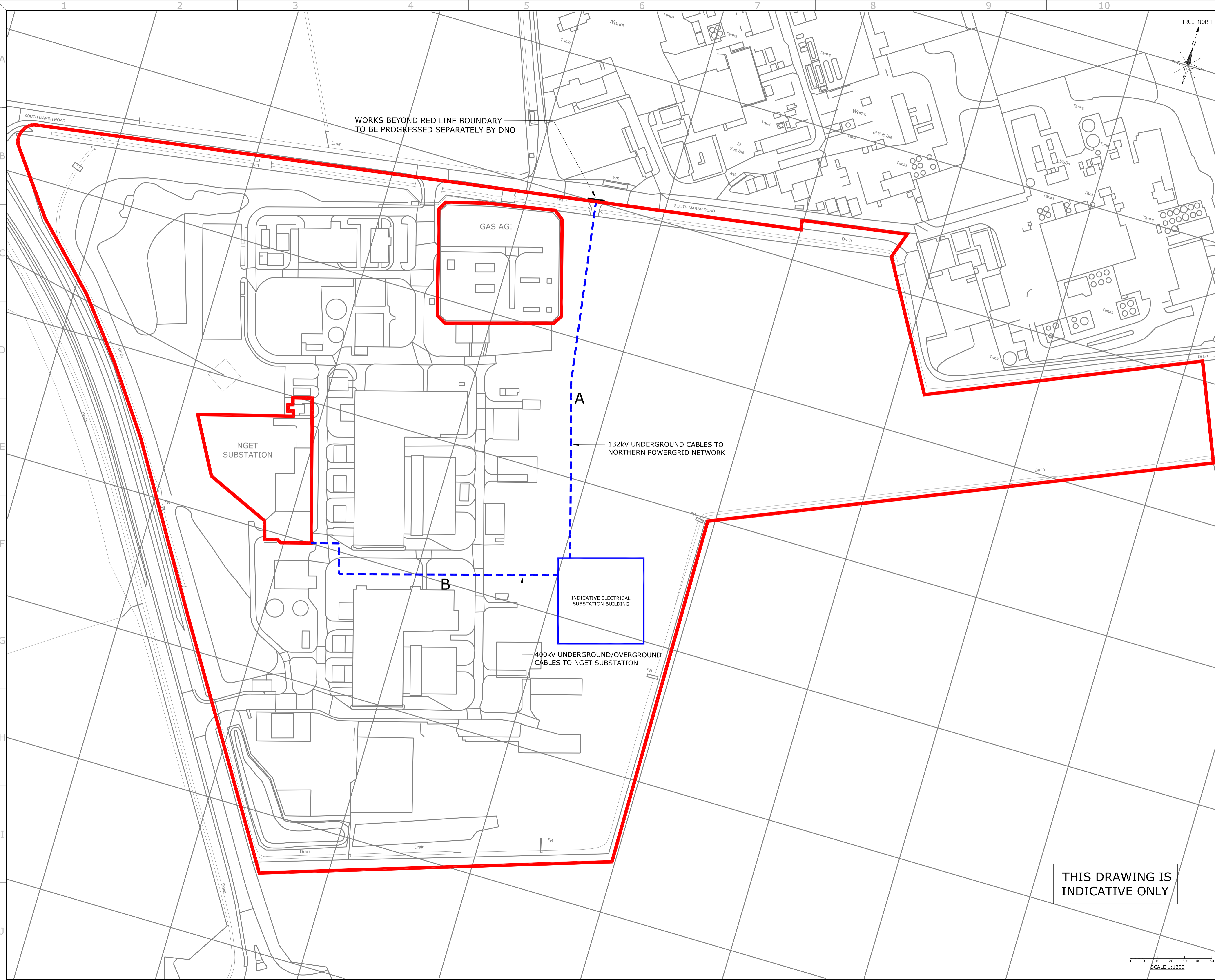
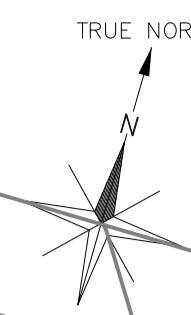
<b>Document Ref</b>	4.7 Indicative Electrical Connection Plan		
<b>Revision</b>	1.0		
<b>Author</b>	AO		
<b>Signed</b>	AO	<b>Date</b>	April 2020
<b>Approved By</b>	RO		
<b>Signed</b>	RO	<b>Date</b>	April 2020
<b>Document Owner</b>	Fichtner Consulting Engineers		



- KEY**
- THE ORDER LIMITS
  - ELECTRICAL CONNECTION INDICATIVE ROUTES

**NOTE**

Infrastructure Planning  
(Applications: Prescribed Forms and Procedure)  
Regulations 2009 - Regulation 5(2)(o)



THIS DRAWING IS INDICATIVE ONLY

1.0	FOR APPROVAL	AO	RO	08.04.20
REV.	DETAILS OF REVISION	DRAWN	CHKD	APR

**FICHTNER**  
CONSULTING ENGINEERS LIMITED

Kingsgate, Wellington Road North,  
Stockport, Cheshire, SK4 1LW, UK  
Tel: 0161 476 0032  
Website: www.fichtner.co.uk

CLIENT: EP WASTE MANAGEMENT LTD

SITE: SOUTH HUMBER BANK

PROJECT: SOUTH HUMBER BANK ENERGY CENTRE

TITLE: SOUTH HUMBER BANK ENERGY CENTRE ORDER INDICATIVE ELECTRICAL CONNECTION PLAN

DRAWING STATUS:	FOR APPROVAL
DRAWN BY:	AO
CHECKED BY:	RO
APPROVED BY:	DATE:
FILENAME:	S2522-0610-0008 1.0 DTW DCO Indicative Electrical Connection Plan
OFFICE OF ISSUE:	STOCKPORT
SHEET SIZE:	A1
DRAWING No.:	SCALE: 1:1250

S2522-0610-0008 Sheet 1 of 1 REVISION: 1.0

