

1 South Elevation
1 : 500



FOR LOCAL AUTHORITY PLANNING PURPOSES ONLY

R2	FOR INFORMATION	AO	TO	13.02.19
R1	FOR INFORMATION	DTW	TO	03.12.18
REV.	DETAILS OF REVISION	DRAWN	CHKD	DATE

FICHTNER
CONSULTING ENGINEERS LIMITED
Kingsgate, Wellington Road North,
Stockport, Cheshire, SK4 1LW, UK
Tel: 0161 476 0032
Website: www.fichtner.co.uk

CLIENT: EP UK INVESTMENTS LTD
SITE: SOUTH HUMBER BANK
PROJECT: SOUTH HUMBER BANK ENERGY CENTRE
TITLE: SOUTH ELEVATION

DRAWING STATUS:	FOR INFORMATION	DATE:	30.11.18
DRAWN BY:	AO	DATE:	30.11.18
CHECKED BY:	TO	DATE:	30.11.18
FILENAME:	2522-032-R2	OFFICE OF ISSUE:	STOCKPORT
SHEET SIZE:	A1	SCALE:	1 : 500
DRAWING No.:	2522-032	REVISION:	R2

Sheet 1 of 4

AOD 102.000m
TOP OF STACK

AOD 59.000m
Boiler Parapet

AOD 29.500m
Turbine Hall Parapet

1 East Elevation
1 : 500



FOR LOCAL AUTHORITY PLANNING PURPOSES ONLY

R2	FOR INFORMATION	AO	TO	13.02.19
R1	FOR INFORMATION	DTW	TO	03.12.18
REV.	DETAILS OF REVISION	DRAWN	CHKD	DATE

FICHTNER
CONSULTING ENGINEERS LIMITED
Kingsgate, Wellington Road North,
Stockport, Cheshire, SK4 1LW, UK
Tel: 0161 476 0032
Website: www.fichtner.co.uk

CLIENT: EP UK INVESTMENTS LTD

SITE: SOUTH HUMBER BANK

PROJECT: SOUTH HUMBER BANK ENERGY CENTRE

TITLE: EAST ELEVATION

DRAWING STATUS: FOR INFORMATION

DRAWN BY: AO DATE: 30.11.18

CHECKED BY: TO DATE: 30.11.18

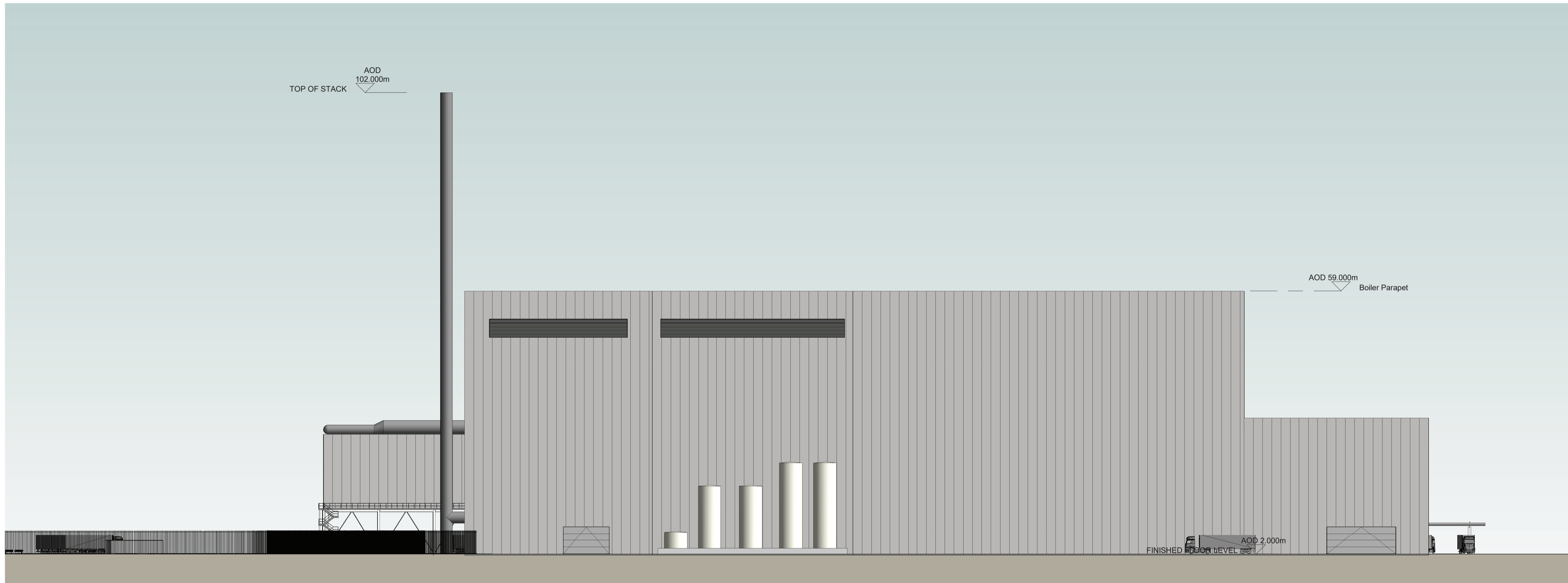
FILENAME: 2522-032-R2

OFFICE OF ISSUE: STOCKPORT

SHEET SIZE: A1 SCALE: 1 : 500

DRAWING No.: 2522-032

REVISION: R2



1 North Elevation
1 : 500



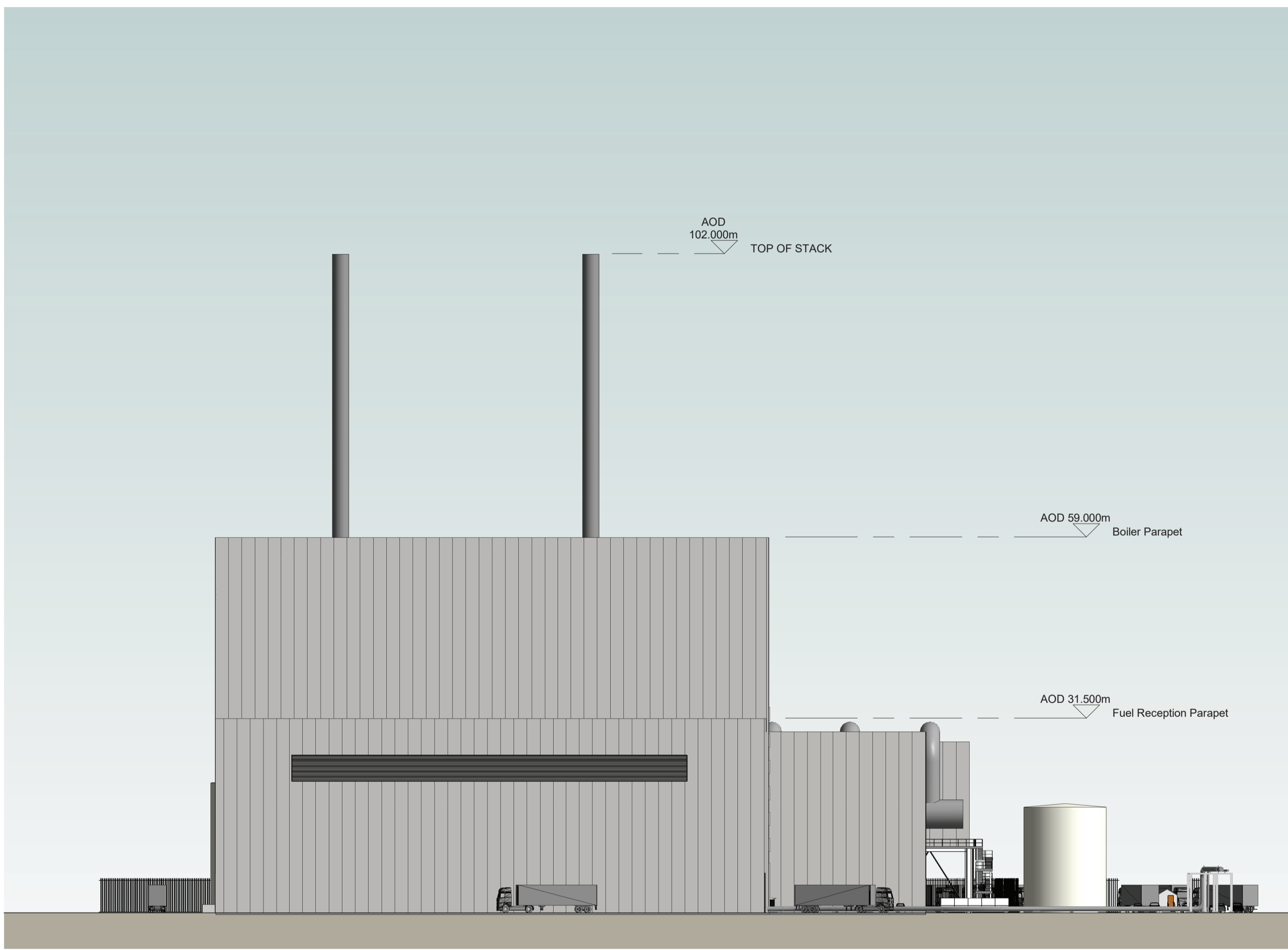
FOR LOCAL AUTHORITY PLANNING PURPOSES ONLY

R2	FOR INFORMATION	AO	TO	13.02.19
R1	FOR INFORMATION	DTW	TO	03.12.18
REV.	DETAILS OF REVISION	DRAWN	CHKD	DATE

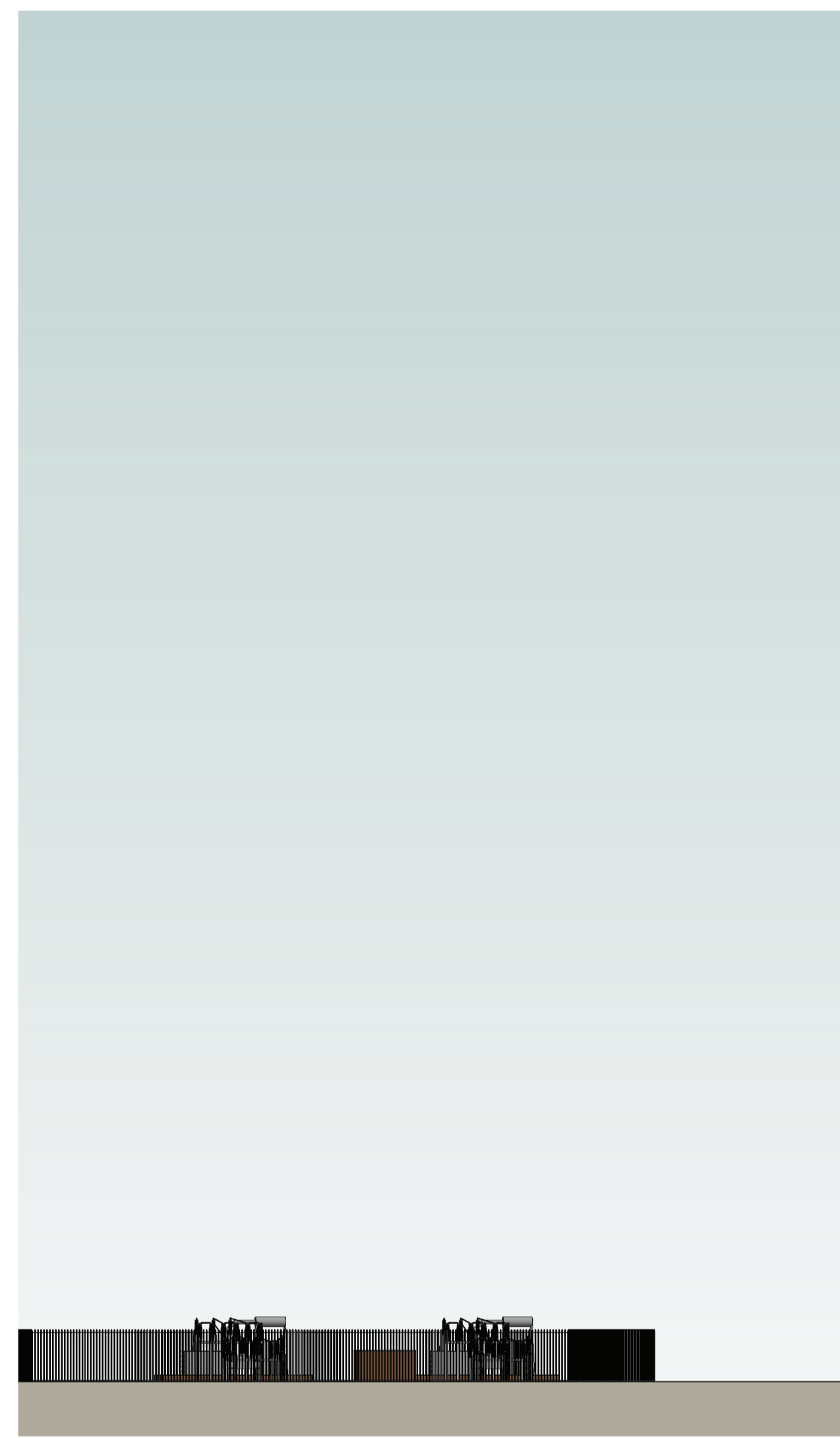
FICHTNER
CONSULTING ENGINEERS LIMITED
Kingsgate, Wellington Road North,
Stockport, Cheshire, SK4 1LW, UK
Tel: 0161 476 0032
Website: www.fichtner.co.uk

CLIENT: EP UK INVESTMENTS LTD
SITE: SOUTH HUMBER BANK
PROJECT: SOUTH HUMBER BANK ENERGY CENTRE
TITLE: NORTH ELEVATION

DRAWING STATUS:	FOR INFORMATION	DATE:	30.11.18
DRAWN BY:	AO	DATE:	30.11.18
CHECKED BY:	TO	DATE:	30.11.18
FILENAME:	2522-032-R2	OFFICE OF ISSUE:	STOCKPORT
SHEET SIZE:	A1	SCALE:	1 : 500
DRAWING No.:	2522-032	REVISION:	R2



1 West Elevation
1 : 500



FOR LOCAL AUTHORITY PLANNING PURPOSES ONLY

R2	FOR INFORMATION	AO	TO	13.02.19
R1	FOR INFORMATION	DTW	TO	03.12.18
REV.	DETAILS OF REVISION	DRAWN	CHKD	DATE

FICHTNER
CONSULTING ENGINEERS LIMITED
Kingsgate, Wellington Road North,
Stockport, Cheshire, SK4 1LW, UK
Tel: 0161 476 0032
Website: www.fichtner.co.uk

CLIENT: EP UK INVESTMENTS LTD

SITE: SOUTH HUMBER BANK

PROJECT: SOUTH HUMBER BANK ENERGY CENTRE

TITLE: WEST ELEVATION

DRAWING STATUS:	FOR INFORMATION	DATE:	30.11.18
DRAWN BY:	AO	DATE:	30.11.18
CHECKED BY:	TO	DATE:	30.11.18
FILENAME:	2522-032-R2	OFFICE OF ISSUE:	STOCKPORT
SHEET SIZE:	A1	SCALE:	1 : 500
DRAWING No.:	2522-032	REVISION:	R2

